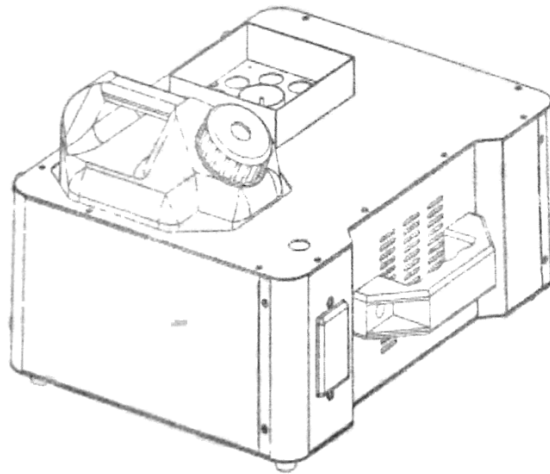




# PROFESSIONAL STAGE SMOKE EFFECT

## ML-9



**RoHS**



CONFORMS TO  
ANSI/UL STD. 998  
CERTIFIES TO  
CAN/CSA STD.  
C22.2 NO.106



## WELCOME TO USE THE SMOKE MACHINE

### Products Description

This is a fog machine well combined with lighting effect. Compact, flexible, simple operation. It has powerful fog jet column, when working together with gorgeous light, you can't imagine how wonderful it is ...

### Feature:

- 1: 9x 3W RGB LED's that can create colorful smoke effect
- 2: Manual switch button can be used in case wireless controller lost
- 3: With wireless controller

### NOTES:

- ▶ The maintenance cycle for the machine is 1-2 months. Method: 20% white vinegar plus 80% distilled water, and then work 3-5 times after heating!
- ▶ The machine should use EWAY'S Liquid, which with distilled water formula, to prolong the life of machine.
- ▶ Please keep your controllers well. We won't provide the spare parts for free if missed.
- ▶ The spare parts of our machine are not suitable for the others brands', otherwise it will be burnt.

### NOTES BEFORE USE:

1. Place the smoke machine horizontally, and check whether it is damaged or not. If damaged, please contact the supplier at once. Unscrew the lid of the oil tank to pour in the high-quality smoke liquid, and then fasten the lid.
2. Before power on, please verify that the supply voltage is in conformity with the rated voltage of the smoke machine. The power supply should be connected to the grounding wire. When power on, the indicator light will turn on, and the smoke machine will begin to work. Connect the machine to different controllers for different controls.
3. At the first time, it is normal if the smoke machine creates just a little smoke or some steam, just take it easy.
4. Please place the smoke machine in the ventilated place but not in the hole, or else the machine's temperature fuse will be disconnected and caused stop-heating.
5. Place the smoke machine on the ground horizontally or install it on the hanger, but not aslant. The machine should keep a minimum 30CM distance all around. Keep it off kids, flames, flammable and explosive materials. Also keep away from nozzle 40CM to prevent scalding.
6. Please add liquid in time. If the smoke machine keeps running when the liquid is used up, it will cause the pump and heater damaged. Turn off the power before adding liquid and operate carefully for fear that the liquid might overflow to cause short circuit.
7. In case that the smoke is diminished, or there is noise from pump, or the machine stops smoking, please disconnect the power at once, and check the liquid deposit, fuse, cable and power plug. If the problems are still not solved, please contact the supplier.
8. In unmanned case, please stop machine running. Keep it off kids. Do not add inflammable liquid, such as oils, gas or spice. Do not touch the wire when the machine is running for fear of electrical shock.
9. Due to condensation, vapour or moisture might gather around the nozzle of machine. There might be some surplus smoke ejected from any smoke machine during operation or after shutdown.
10. Please make sure there is no liquid and metals inside machine before turn on the power each time. Do not modify or repair the machine by yourself. If there is any problem, please contact the supplier.

### 1. Introduction

\*Important environmental information about this product.

- > This symbol on the device or the package indicates that disposal of the device after its life cycle could harm the environment.
- > Do not dispose of the unit (or batteries) as unsorted municipal waste; it should be taken to a specialized company for recycling.
- > This device should be returned to your distributor or to a local recycling service.
- > Respect the local environmental rules.
- > If in doubt, contact your local waste disposal authorities.
- > Thank you for choosing this machine. If the device was damaged in transit, don't install or use it and contact your dealer.

### 2. Safety Instruction

- > Be very careful during the installation: touching live wires can cause life-threatening electroshocks.
- > Do not touch the device during operation as the housing heats up.
- > Keep this device away from rain and moisture.
- > Unplug the mains lead before opening the housing.
- > Damage caused by disregard of certain guidelines in this manual is not covered by the warranty and the dealer will not accept responsibility for any ensuing defects or problems.
- > A qualified technician should install and service this device.
- > Do not switch the device on immediately after it has been exposed to changes in temperature. Protect the device against damage by leaving it switched off until it has reached room temperature.
- > This device falls under protection class 1. It is therefore essential that the device be earthed. Have a qualified person carry out the electric connection.
- > Make sure that the available voltage does not exceeds the voltage stated in the specification of this manual.
- > Do not crimp the power cord and protect it against damage. Have an authorized dealer replace it if necessary.
- > Disconnect the device from the mains to clean it or when it is not in use. Handle the power cord by the plug only.
- > Note that damage caused by user modification to the device is not covered by the warranty.
- > Keep the device away from children and unauthorized users.

### 3. General Guidelines

- > This device is designed for professional use on the stage, in disco, theaters, etc. The device should only be used indoors with an alternating current of max 240V AC/50HZ.
- > Do not shake the device. Avoid brute force when installing or operating the device.
- > Select a location where the device is protected against extreme heat, dust and moisture.
- > Familiarize yourself with the functions of the device before actually using it. Do not allow operation by unqualified people. Any damage that may occur will most probably be due to unprofessional use of the device.
- > Use the original packaging if the device is to be transported.
- > All modifications of the device are forbidden for safety reasons.
- > Only use the device for its intended purpose. All other users may lead to short circuits, burns, electroshocks, crash, etc. Using the device in an unauthorized way will void the warranty.
- > This device is not suited for permanent operation. Frequent operation breaks will protect the life span of your smoke machine.

#### 4. Installation

- Have the device installed by a qualified person, respecting EN 60598-2-17 and all other applicable norms
- The carrying construction must be able to support 10 times the weight of the device for 1 hour without deforming.
- Never stand directly below the device when it is being mounted, removed or serviced.
- Have a qualified technician check the device once a year and once before you bring it into service.
- Install the device in a location with few passers-by that is inaccessible to unauthorized persons.
- Adjust the desired inclination angle via the mounting bracket and tighten the bracket screws.
- Make sure there is no flammable material with a 50CM radius of the device.

#### 5. Technical Specifications

Voltage used	AC220-240V/110-130 50-60Hz
Power	900W
Current-limited safety device	10A/250V
Pre-heating time	3min
Smoke output	340mm <sup>3</sup> per minuut
LED	3Wx3 (3R+3G+3B)
Height of fog column	>4M
DMX	7CH
Manual buttom	Support
Wire controller	X-2
Wireless Controller	W-5
Capacity of oil tank	2.5L
Gross weight	6.04kg
Packaging volume(mm)	350*280*240(mm)

#### 6. Use

##### ML-9 Operation

1:Open the carton and carefully remove the unit from the carton

2: Set the fog machine on a flat dry surface.

3:Fill the fog fluid reservoir with our brand fog juice only then tighten the cap.

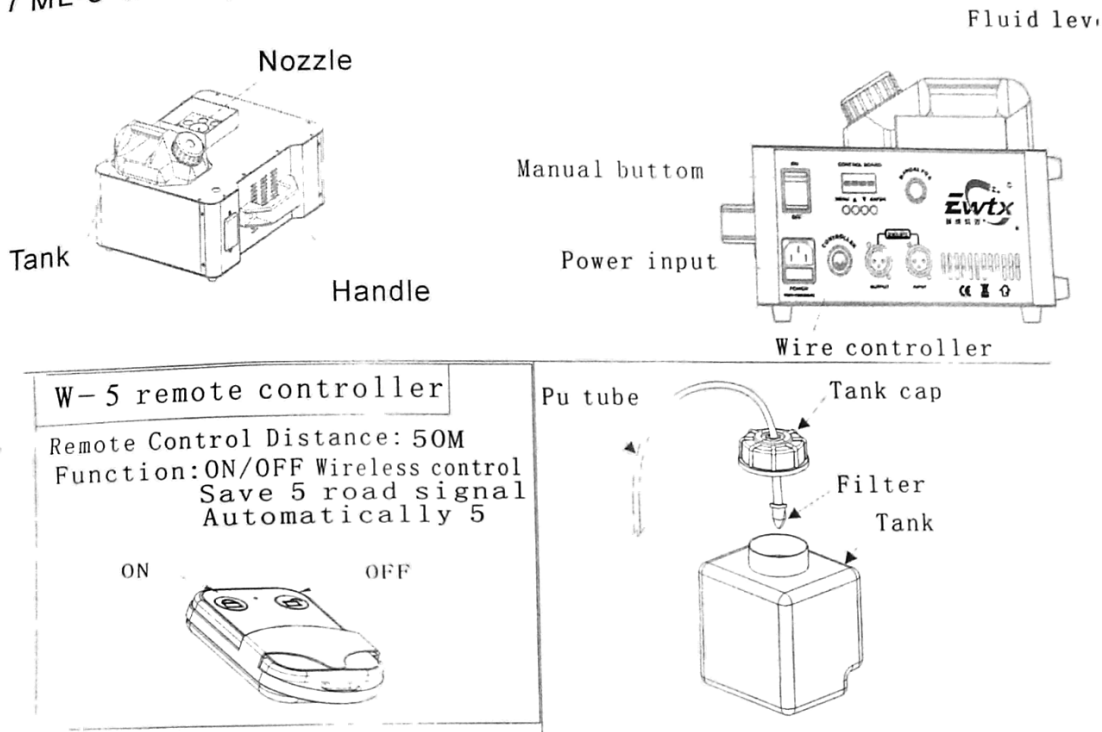
4:Plug the unit into a matching power supply. the device need few minutes for preheating it will display "up" on the operate board when heating ,and turn to "ready" when ready to fog .

5:You press the fog button located at rear or press "lock" on the remote to emit fog .

(Note: there 3 ways to emit fog: manual control, remote controller, and DMX controller ,for details ,please see below controller operation)

Always, monitor tank fluid level as you are fogging.. when the machine runs without liquid, it will activate the oil-free protection and can not fog until fill enough liquid

## 7 ML-9 Description



## 8.. Note:

If you experience low output, pump noise or no output at all, unplug immediately. Check fluid level, the external fuse, remote control connection and power from the wall. If all of the above appears to be O.K., plug the unit again. If fog does not come out after holding the remote button down for 30 seconds, check the hose attached to the tank to make sure there is fluid going through the hose. If you are unable to determine the cause of the problem, do not simply continue pushing the remote button, as this may damage the unit. Return the machine to your dealer.

### Special attention:

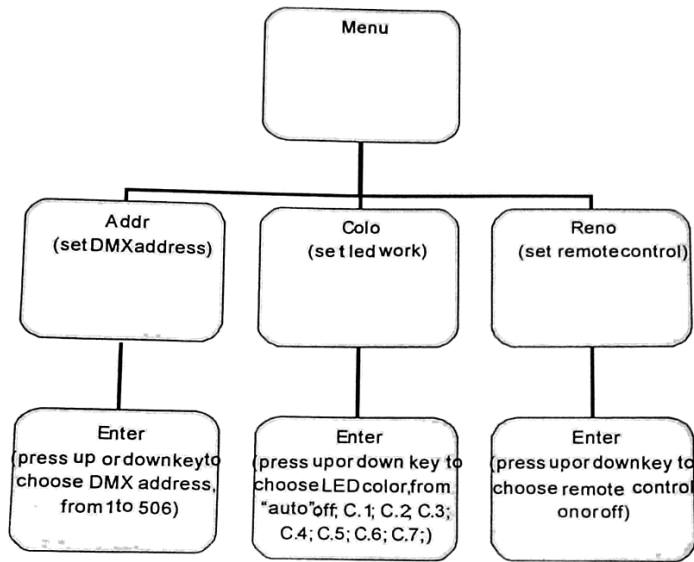
Some character which show on display screen can not adjustment from regular menu. The display character shows as meaning as below:

\*When the screen display "----", is remote pairing code, so please press the "lock" button at wireless remote to have it match this device. Each machine can be paired up to five different addresses code remote control. With same address code of the remote control different machines can be use same one.

\*When the screen display " up ", at this time the machine in the heating state.

\*When the screen display "read", at this time the machine finished preheating and ready to fog,. But not on DMX control.

## Manual operation steps for led display screen



## DMX signal control instruction: 7 channels

DMX channel	Channel values	Requirement	function
Ch1	0		Smoke off
	1-255		Smoke output
Ch2	0		Light closed
	1-255		Brightness adjust from dark to bright, work together with other channel
Ch3	0-20		Closed
	21-160		Select a fixed color
	160-255		Auto speed of change color, from slow to fast
Ch4	0		Strobe off
	1-255		Strobe , speed from slow to fast
Ch5	0	Ch3<=20	Light closed
	1-255	Ch3<=20	Red adjust brightness
Ch6	0	Ch3<=20	Light closed
	1-255	Ch3<=20	Green adjust brightness
Ch7	0	Ch3<=20	Light closed
	1-255	Ch3<=20	Blue adjust brightness